

E-CUBE 7



All-in-One Ultrasound Machine for Top Performers

The smart and intuitive application software and features of the E-CUBE7 ultrasound machine empower clinicians to make diagnostic decision with confidence. The E-CUBE 7 provides clinicians with excellent 2D, color flow and CW/PW Doppler performance. The E-CUBE 7 is the only sonogram machine in its class that provides high featured transducers like single crystal convex and phased array.

Features

- Crystal Signature™: High class single crystal transducer technology provides higher sensitivity, better penetration, and less heat degradation than traditional PZT materials.
- Compact and optimal space solutions. This ultrasound machine lightweight and slim design provides the best fit for small spaces and excellent mobility. The design ergonomics maximize space efficiency and mobility for routine daily practices.
- Flexcan™ Architecture, ALPINIOIN's innovative flexible software driven imaging platform for system stability and easy upgrades with minimum hardware changes.
- Intelligent key grouping on compact size of control panel.
- Micro-pinless transducer connectors with anti-dust effect.



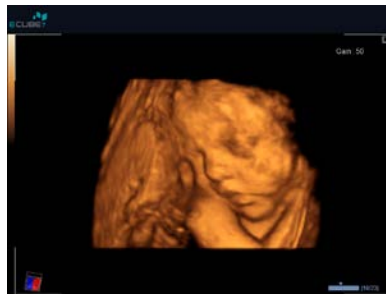
- MicroFit: Ergonomic design technology for excellent grip and lightweight transducers to help reducing user fatigue.
- Excellent storage capability: Optimal storage formats (USB, CD/DVD and network storage connections).
- Imaging Technologies:
Advanced Spatial Compounding Imaging (SCI).
Harmonic Imaging (FTHI/PITHI).
Speckle Reduction Imaging (SRI/FullSRI).
- Smart performance in multiple applications:
Application specific measurement package.
Volume Master™. Intuitive and lucrative 3D/4D software.
Cube View™. Real-time ultrasound image sharing solution.
Auto trace PW, CW.
Anatomical M-mode.
Xspeed™ (Auto optimization).
Stress Echo.
Tissue Doppler Imaging.
Auto IMT measurement.
Needle Vision™/ Needle Vision™ Plus.
Panoramic imaging.
DICOM 3.0 Connectivity.



Specifications

- Dimension : 1,425(tall) / 1,355(short) X 509 X 670 mm (H x W x D).
- Weight : 57 kg.
- 19.5" Wide LED monitor.
- Applications: Abdominal, MSK, Orthopedic, Pain Management, Small Parts, Women's Health, 4D, Cardio-Vascular.





28 Weeks Fetus



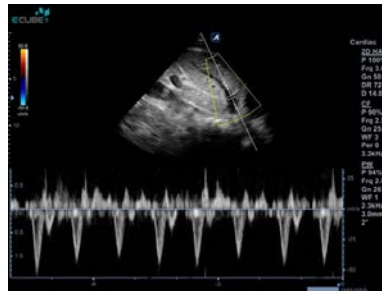
Umbilical Cord



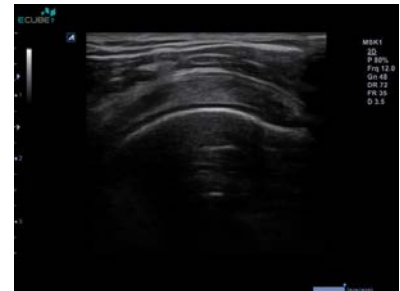
Uterus



Carotid Auto IMT



PW Doppler



Supraspinatus

- **Transducers**
 - SC1-6T 1-6MHz Single Crystal Convex. Abdomen, Renal, OB, Fetal Echo, GYN, Urology.
 - C1-6T 1-6MHz Convex. Abdominal, OB, GYN, Fetal Echo, Emergency Medicine.
 - C5-8T 5-8MHz Micro-convex. Abdomen, Pediatric abdomen, Neonatal veterinarian, Urology.
 - C5-8NT5-8MHz Micro-convex. Pediatric, Cardiac, Vascular, Emergency Medicine.
 - VC1-6T1-6MHz 3D/4D Volume Convex. Abdomen, Renal, OB, Fetal Echo, GYN.
 - L3-12T 3-12MHz Linear. Carotid, Peripheral Vascular, Thyroid, Testicle, MSK, Breast, Emergency Medicine, Linear, Endocavity, Single Crystal Phased Array.
 - L3-12HT 3-12MHz High density Linear. Carotid, Peripheral Vascular, Thyroid, Testicle, MSK, Superficial, Breast.
 - L3-12HWD 3-12MHz Wide footprint Linear (60mm). Carotid, Peripheral Vascular, Thyroid, Testicle, MSK, Superficial, Breast.
 - L3-8 3-8MHz Linear. Carotid, Peripheral Vascular, Thyroid, Testicle, MSK, Superficial, Breast.
 - L8-17 8-17MHz Linear. Carotid, Peripheral Vascular, Thyroid, Testicle, MSK, Superficial, Breast.
 - EC3-10T 3-10MHz Endocavity (straight type). GYN, OB, Fetal Echo, Urology, Emergency Medicine.
 - EV3-10T 3-10MHz Endocavity (curved type). GYN, OB, Fetal Echo, Emergency Medicine.
 - SP3-8T 3-8MHz Single Crystal Phased Array. Abdominal, Cardiac, Emergency Medicine.
 - SP1-5T 1-5MHz Single Crystal Phased Array. Cardiac, Abdominal, Renal, TCD, Emergency Medicine.

